

In February 2019, Essential Management Solutions (EMS) joined WCG to form the Remediation Services Group (RSG). Weaver's RSG professionals are nationally known as industry leaders in the design, installation and management of sophisticated wastewater and remediation systems for complex contaminants

Weaver's RSG brings clients over 30 years of industry experience directing, managing, designing, constructing and operating wastewater and remediation programs for a wide range of projects. This division of WCG is headquartered in Colorado with over 100 remediation projects successfully completed across the country.

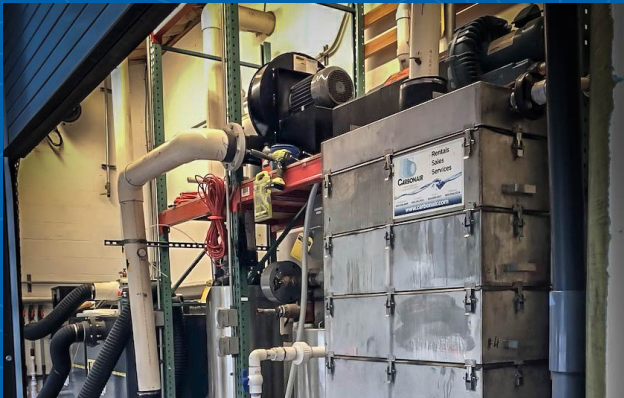


WCG and RSG offer a wide variety of services including:

- Leachate, Wastewater, and Groundwater Treatment
- Six Employees that hold Wastewater Treatment Plant Operator Certifications
- Treatment System Design / Construction / O&M for BOD, VOCs, SVOCs, 1,4 Dioxane and other Hazardous Compounds.
- 24/7/365 Remote System Monitoring and Critical Alarm Response Teams / Program
- Management of Leachate Collection and Storage Systems at Client Landfill Facilities



The Weaver Water Treatment team routinely utilizes the network of in-field O&M technicians within Weaver Companies to support ongoing projects. This team draws on their extensive practical experience often supporting additional activities on existing client facilities for the successful startup and commissioning of new projects, increasing system performance, monitoring system performance, and lowering asset life cycle costs.



Senior members of the RSG have extensive experience managing and optimizing biological treatment systems; including selecting / designing and cultivating specific microbial populations to target unique compounds. This team remains active evaluating and piloting programs focused on the management and treatment of emerging contaminants. When remote monitoring is needed, the team can be expanded to bring in our Sligo Systems specialists. Sligo's custom SCADA systems (VCMS™) can be integrated with existing equipment to remotely monitor system performance.

We cover all facets of environmental consulting:



Ground



Water



Air



EHS